

## **ITD D3 Addition & Building Improvement Schedule Narrative – Addendum #1**

Upon Notice of Intent to Award, Steel Fabricator, Elevator and MEP Trades will need to proceed with obtaining submittals and shop drawings as quickly as possible for review, approval and procurement of materials. Estimated material/equipment lead times are built into the schedule.

CM Company, Inc. will mobilize to site starting 6/17/2024 and work to commence starting 6/24/2024.

### **B3003 Training Addition**

The first activities required to be completed for this area are the relocation of the existing gas line by Intermountain Gas and the relocation of the existing data/communication wiring and boxes as per Keynotes 5, 6, 7 and 8 on B3003 Training Addition Sheet E41. We have confirmed there is no coordination required with an outside communication service provider. Coordination with the Owner onsite required for this relocation work.

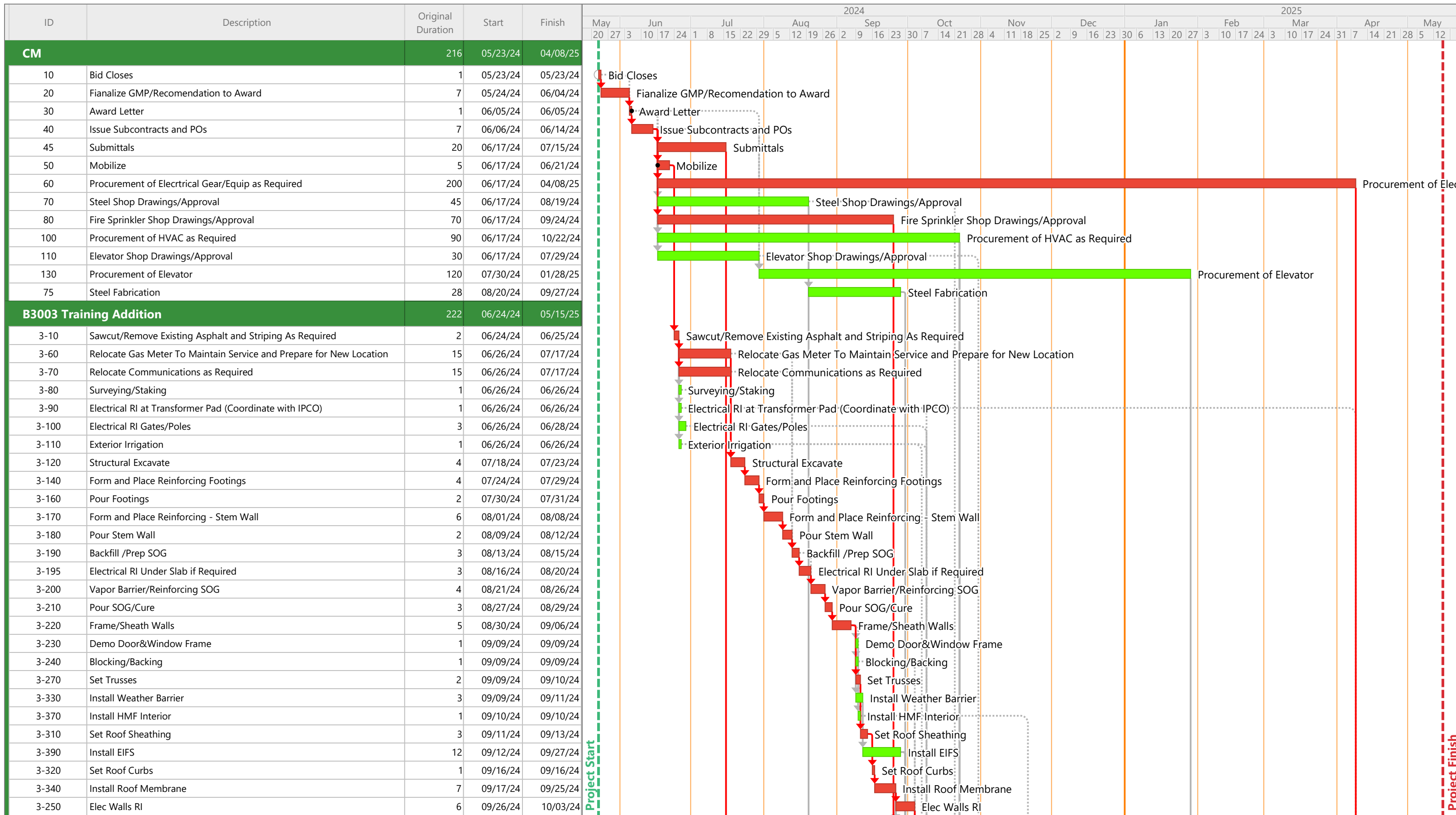
With the information presented to us at this time, there is a long lead time for the new electrical main distribution panel. We have included this in the schedule with the intent to finish the addition scope and will then come back to complete the final power change over and start up upon receipt of the panel. The existing building power will need to remain intact throughout the construction duration. The modifications to the existing HVAC will also need to be coordinated along with the receipt of the new electrical gear, startup etc. Please note the activities included in the schedule and bid accordingly.

### **B3007 Tenant Improvement & Building Improvement**

This area is slated to start in the middle of July with the intent to complete the Tenant Improvement scope for temporary occupancy while waiting for the new elevator. We have included the estimated lead times for the elevator in the schedule along with the timing of when to remove the existing elevator and start preparing the shaft for the new.

This building is receiving a new full and complete fire sprinkler system which also includes shop drawing/approval lead times prior to the start of installation.

**Please note, it may be required for Trades to work in multiple areas at the same time. Manpower must be provided accordingly.**



Start Date: 05/23/24  
 Finish Date: 05/15/25  
 Data Date: 04/29/24  
 Run Date: 05/10/24  
 ITD D3 - Bldg Improv & TI Bid Schedule Addendum #1.ppx  
 Page 1A

ITD D3 - Bldg Improv & TI  
 CM Company, Inc. Job # - 2417  
 Bid Schedule Addendum #1











